

BEHIND

THE

W



WESTERN MICHIGAN UNIVERSITY
GRAB THE REINS.

WHAT'S
BEHIND
THE



HAWORTH COLLEGE
OF BUSINESS

www.wmich.edu/haworth



WMU IS MICHIGAN'S FOURTH LARGEST HIGHER EDUCATION INSTITUTION, ATTRACTING A DIVERSE AND CULTURALLY RICH STUDENT BODY FROM ACROSS THE UNITED STATES AND SOME 80 OTHER COUNTRIES. ITS NEARLY 900 FULL-TIME FACULTY MEMBERS HAVE BEEN TRAINED AT SOME OF THE WORLD'S FINEST INSTITUTIONS AND THEY BRING TO THE UNIVERSITY A GLOBAL PERSPECTIVE THAT ENHANCES THE LEARNING ENVIRONMENT.



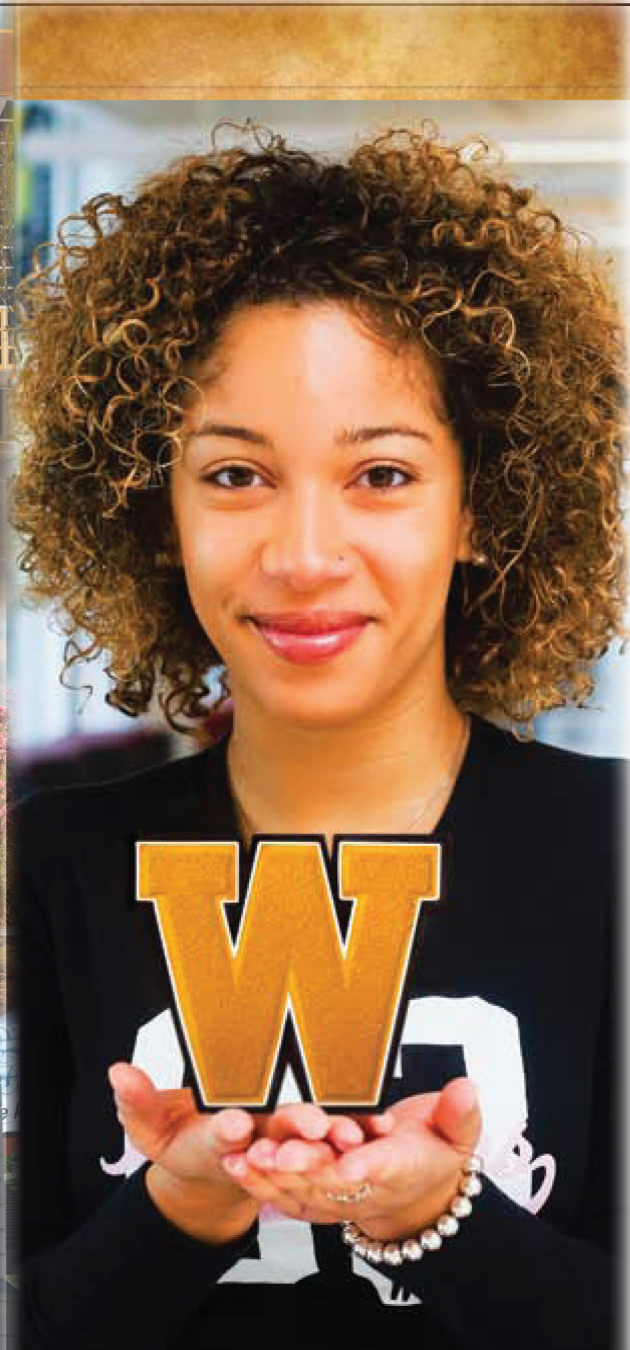


WESTERN MICHIGAN UNIVERSITY GRAB THE REINS.



WMU

WMU'S DEPARTMENT OF THEATRE IS WIDELY RECOGNIZED AS ONE OF THE NATION'S BEST UNDERGRADUATE PROGRAMS AND IS A REGULAR WINNER OF AMERICAN COLLEGE THEATRE FESTIVAL AWARDS.



WESTERN MICHIGAN IS A DYNAMIC, STUDENT-CENTERED RESEARCH UNIVERSITY WITH AN ENROLLMENT OF NEARLY 25,000. WMU IS FOCUSED ON DELIVERING HIGH-QUALITY UNDERGRADUATE INSTRUCTION, ADVANCING ITS GROWING GRADUATE DIVISION AND FOSTERING SIGNIFICANT RESEARCH ACTIVITIES.



WESTERN MICHIGAN UNIVERSITY
GRAB THE REINS.

WHAT'S
BEHIND
THE



COLLEGE OF
AVIATION

www.wmich.edu/aviation



U.S. NEWS & WORLD REPORT
RANKS WMU'S PROGRAMS IN OC-
CUPATIONAL THERAPY, PHYSICIAN
ASSISTANT AND SPEECH PATHOL-
OGY AMONG THE TOP 50 IN THE NA-
TION.

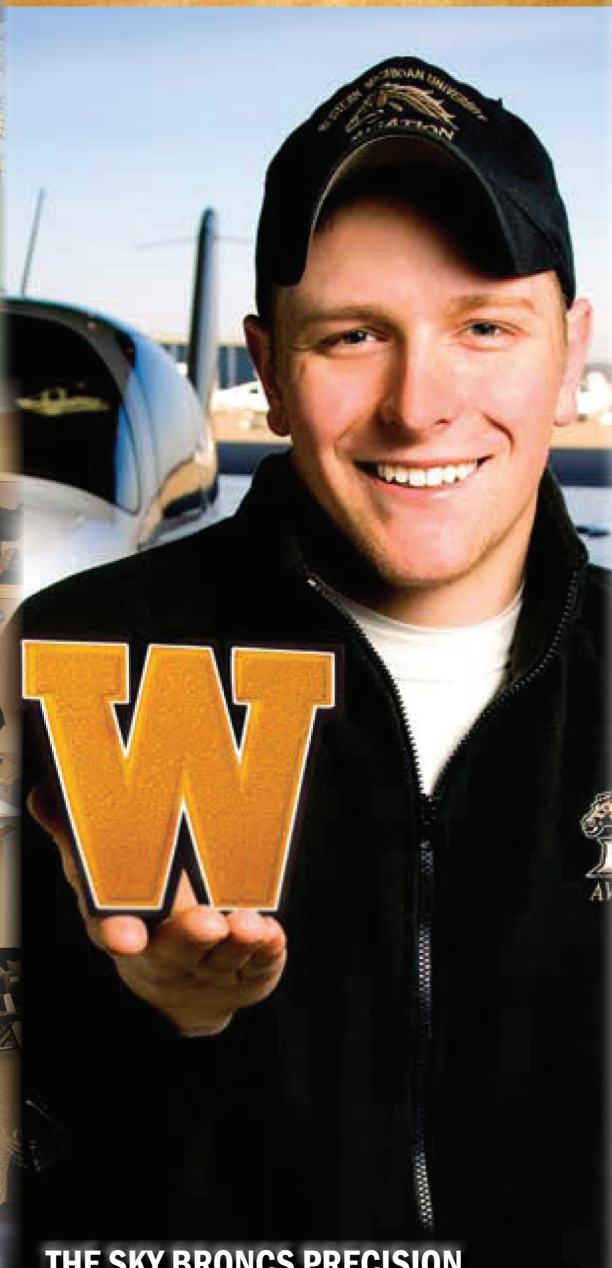




WESTERN MICHIGAN UNIVERSITY GRAB THE REINS.



WMU ATHLETICS IS DEDICATED TO PROVIDING STATE-OF-THE-ART ATHLETIC FACILITIES FOR ITS STUDENT-ATHLETES, COACHES AND FANS.



THE SKY BRONCS PRECISION FLIGHT TEAM FROM THE COLLEGE OF AVIATION WON THE 1983, 1998 AND 2002 NATIONAL INTERCOLLEGIATE FLYING ASSOCIATION NATIONAL CHAMPIONSHIPS AND HAS PLACED AMONG THE TOP THREE IN NATIONAL COMPETITION 15 OF THE PAST 16 YEARS.



Kathy Beauregard, the Director of Athletics at Western Michigan University, has been involved with the Broncos in several capacities over the course of the past 29 years. She is the second-longest serving athletic director in the Mid-American Conference.

Beauregard arrived in Kalamazoo as a coach before moving into administration and is entering her 12th season as mentor of one of the top programs in the MAC.

WMU athletic facilities have greatly improved under Beauregard's leadership. The \$8-million dollar Bill Brown Football Alumni Center and the \$21-million Seelye Athletic Indoor Center have benefited numerous sports teams and provide top-notch facilities for Bronco student-athletes. The locker rooms at Lawson Ice Arena were renovated and completed over the past year and the department continues to raise funds for the Hyames Field Renovation Project. WMU is in the midst of building a two million dollar state-of-the-art facility and Field Turf was also installed at Waldo Stadium during the Summer of 2006.

Heavily involved in her profession, Beauregard assumed the chair position of the NCAA Olympic Sports Liaison Committee in 2001, a position which she held for two years. She represented WMU as a member of the NCAA Championships Cabinet and NCAA Football Bowl Certification Committee and currently serves on the NCAA Diversity and Inclusion Committee.

The 2008-09 year saw the Bronco volleyball and men's tennis programs capture regular season MAC crowns. The volleyball team advanced to the round of 16 at the NCAA Tournament, while the Bronco football team participated in its second bowl in three seasons and the men's basketball team won yet another MAC West title.

The 2007-08 academic year saw success within the department, on the playing field and in the classroom. WMU Athletics announced the renovation of historic Hyames Field. Heading into the future, the facility will be known as Robert J. Bobb Stadium and will undergo \$2.0 million of work over the next year. Renovations to Sorensen Courts, Fran Ebert Field and upcoming work to the men's basketball locker rooms all highlight Beauregard's dedication to moving WMU Athletics forward.

Athletically, WMU's tennis programs found success yet again with both winning a regular season MAC title and the men's program capturing the tournament title to earn a berth in the 2008 NCAA Tournament. Both Dave Morin and Besty Kuhle were named MAC Coaches of the Year for the second-straight season. The men's basketball and women's volleyball programs captured MAC West titles during the past athletic season. A pair of Bronco track student-athletes earned All-America honors with Becky Horn earning the nod during the indoor and outdoor seasons and finishing third in the 800m at the 2008 NCAA Outdoor Championships.

Beauregard ensured the longevity of WMU's football and men's basketball programs by restructuring Bill Cubit's and Steve Hawkins' contracts in 2007 and 2008, respectively. WMU Athletics also welcomed Tasha McDowell as the fifth head coach of WMU's women's basketball program in 2008.

Academically, WMU boasted a pair of Academic All-Americans in Anthony Gebhart (first team) and Joe Reitz (second team). Gebhart was the first football representative since 1998. Volleyball, baseball and gymnastics finished in the top 10 among other like programs in the APR and WMU football had the highest APR score in the MAC for the 2006-07 campaign. Overall, 415 student-athletes finished 2007-08 with a 3.0 or better cumulative GPA.

In 2006-07, men's and women's tennis not only repeated as MAC Tournament champions but captured regular season titles as well. Both Morin and Kuhle earned MAC Coach of the Year honors. The WMU football team participated in the program's first postseason bowl game since 1988. The Broncos boasted three NCAA statistical champions in five categories – Ameer Ismail (FB - sacks and tackles for loss); Carrie Moore (WBB - points per game) and Mark Letestu (HOCKEY - freshman scoring and short-handed goals).

Western Michigan continued to pursue excellence in the classroom in 2006-07 as 26 student-athletes in 14 sports earned Academic All-MAC status. WMU had five of its programs honored as being in the top-10 percent in their respective sport in the announcement for their excellence in the classroom over the years identified in the most recent APR; baseball, men's basketball, gymnastics, women's tennis and volleyball. The Broncos boasted five academic all-district selections and a pair of academic all-americans in Joe Reitz and Carrie Moore.

Moore and Ismail earned All-America status in their respective sports with Moore receiving honorable mention for Kodak All-American and Ismail earning Second Team AP All-American.

In 2005-06, Beauregard oversaw a department that captured the Jacoby Cup Trophy, awarded to the top women's program in the MAC based on sports standings. WMU has now won the Jacoby and Reese (men's overall sports award) trophies during Beauregard's tenure. The Broncos garnered three regular season titles – gymnastics, softball and women's tennis and two MAC Tournament titles – gymnastics and women's tennis. Under Beauregard's direction, WMU also won its 100th MAC title all-time in 2005-06.

The 2004-05 athletic campaign continued what has become common place at Western Michigan. Team and individual success began in the fall and continued through the spring, highlighted by a MAC Championship in women's tennis. The strength of the women's programs as a group allowed WMU to finish second in the Jacoby Cup.

Along with four MAC titles (men's basketball, men's and women's soccer and men's tennis) in 2003-04, the Broncos also enjoyed an increased level of success in the classroom. WMU's graduation rate of 83 percent in 2003 ranked eighth nationally and featured a program grade point average of nearly 3.00.

On the playing field in 2002-03, the athletics campaign was highlighted by a pair of conference titles in women's basketball and softball. The men's basketball team also made a postseason appearance, competing in the National Invitation Tournament. Postseason appearances by the WMU football, volleyball and men's tennis team highlighted the program's 2000-01 athletic competition.

The 1999-2000 campaign was highlighted by the football team's West Division title and trip to the MAC Championship. The women's tennis squad captured the MAC Tourney title and advanced to the NCAA Tournament for the second-straight year and the women's basketball squad made its second-consecutive appearance in the WNIT.

In just her second year (1998-99), Beauregard provided support which helped the Bronco men's athletic squads jump from 10th to first place in the Reese Cup standings, giving Western Michigan a share of its first all-sports trophy in 17 years.

Previously the senior associate athletic director (1993-97), she supervised all revenue sports, the University's compliance with NCAA rules, academic services, student-athlete welfare, and athletic marketing and communications.

Beauregard initially came to WMU in 1979 as head women's gymnastics coach. In nine seasons (1980-88), she produced two MAC title teams and was twice named the conference's coach of the year.

Beauregard has been active in numerous community service organizations, including Kalamazoo Rotary, the American Heart Association, Big Brothers/Big Sisters and the Glowing Embers Girl Scouts Council.

Honored by numerous organizations throughout her career, Beauregard was awarded both the Woman of Achievement Award (YWCA) and Athena Award (Kalamazoo Chamber of Commerce) in 2002.

Beauregard is a native of Kalamazoo and graduate of Loy Norrix High School. She earned a bachelor's degree from Hope College in 1979 and a master's degree from WMU in 1981.

In 2000, Beauregard received the Hope College Distinguished Alumni Award from her alma mater.

She and husband, Rick, have a 18-year-old son, Brad, who will attend WMU in 2009. Rick retired from Kalamazoo Public Schools after 32 years of service and began Beauregard Home Services in the Fall of 2006.



WESTERN MICHIGAN MID-AMERICAN CONFERENCE REGULAR SEASON CHAMPIONSHIPS (108)

Men's Tennis (21)	1983, 1982
2009, 2008, 2007, 2004, 2000, 1999, 1981,	Men's Basketball (5)
1965, 1964, 1963, 1962, 1961, 1960, 1959,	2004, 1998, 1981*, 1976, 1952
1958, 1957, 1956, 1955, 1954, 1952, 1950	Women's Cross Country (4)
Men's Outdoor Track & Field (18)	1993, 1986, 1985, 1984
1996, 1995, 1985, 1980, 1976, 1971, 1970,	Women's Gymnastics (3)
1969, 1968, 1966, 1965, 1964, 1963, 1962,	2006, 1987, 1986
1961, 1960, 1959, 1958	Softball (3)
Baseball (14)	2006, 1984, 1983
1989, 1967, 1966, 1963, 1962, 1961, 1959,	Football (2)
1958, 1957, 1955, 1952, 1951, 1950, 1949	1988, 1966*
Men's Cross Country (14)	Men's Swimming & Diving (2)
1980, 1979, 1977, 1976, 1970, 1968, 1966,	1964, 1963
1963, 1961, 1960, 1959, 1958, 1957, 1948	Women's Outdoor Track & Field (1)
Women's Tennis (11)	1985
2008, 2007, 2006, 2005, 2001, 2000, 1999,	Men's Golf (1)
1997, 1995, 1990, 1984	1949
Women's Volleyball (9)	*shared title
2008, 2000, 1988, 1987, 1986, 1985, 1984,	



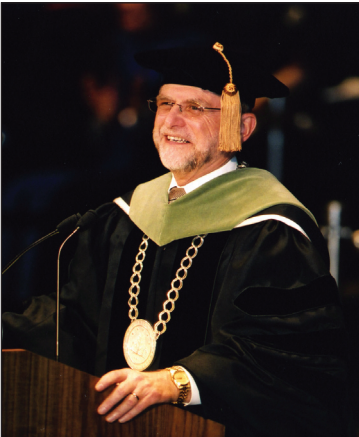
WESTERN MICHIGAN UNIVERSITY GRAB THE REINS.



Dr. John M. Dunn became the eighth president of Western Michigan University on July 1, 2007. He was appointed by the WMU Board of Trustees following a nationwide search.

Prior to coming to WMU, President Dunn served as interim chancellor at Southern Illinois University Carbondale. Earlier, he held the position of provost and vice chancellor at SIUC.

An educator for more than 35 years, Dr. Dunn was dean of the University of Utah's College of Health before moving to SIUC, holding that post from 1995 to 2002. Before that, he was at Oregon State University for 20 years, last serving as associate provost there. His earlier positions at Oregon State included assistant dean of Health and Human Performance, chair of the Department of Exercise and Sport Science and director of the university's Special Physical and Motor Fitness Clinic.



Internationally known for his research and writing about the long-term health of individuals with disabilities, Dr. Dunn is the author of more than 50 professional papers and book chapters. He is a past president of the Research Consortium of the American Alliance for Health, Physical Education, Recreation and Dance; past editor of *Quest*, a professional publication for kinesiology scholars; and past president of the American Academy of Kinesiology and Physical Education.

Since moving to Michigan, President Dunn has been actively engaged with state and community efforts that focus on quality-of-life issues and enhancing economic development. By appointment of Gov. Jennifer Granholm, he represents the University and West Michigan as a member of the Michigan Strategic Economic Investment and Commercialization Board. He also is a member of the boards of the Bronson Healthcare Group, First National Bank, Southwest Michigan First, the Gilmore Keyboard Festival and the WMU Foundation. He is also the 2009 chairman of the Greater Kalamazoo Area United Way campaign.



In early 2009, President Dunn led the Mid-American Conference search that resulted in the appointment of new MAC Commissioner Dr. Jon A. Steinbrecher.

BOARD OF TRUSTEES

Dennis W. Archer
Jeanne H. Carlson
Sarah L. DeNooyer
William D. Johnston
William J. Martin
Kenneth V. Miller
Daniel W. Pero
Larry F. Tolbert

Detroit, Mich.
Novi, Mich.
Kalamazoo, Mich.
Portage, Mich.
Battle Creek, Mich.
Kalamazoo, Mich.
Dimondale, Mich.
Kalamazoo, Mich.

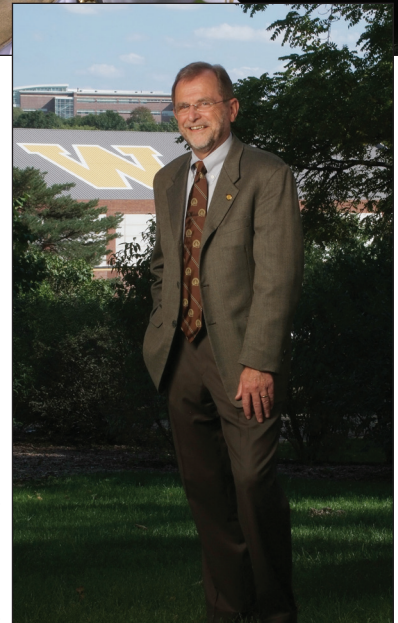
UNIVERSITY SENIOR STAFF

Dr. John M. Dunn
Dr. Timothy J. Greene
Lowell Rinker
Carl M. "Bud" Bender
Carol L.J. Hustoles
Gregory J. Rosine
Dr. Paula D. Kohler
Dr. Diane K. Anderson
Dr. James A. Gilchrist
Dean K. Honsberger
Robert G. Miller
David A. Glenn
Cheryl P. Roland
Kathy B. Beauregard
Jamie M. Jeremy
Dr. Martha B. Warfield
Kahler Scheumann
Betty A. Kocher

President
Provost & VP for Academic Affairs
CFO, VP for Business and Finance
VP for Development
VP for Legal Affairs & General Counsel
Senior VP for Advancement & Legislative Affairs
Associate VP for Research
VP for Student Affairs
Vice Provost for Academic Operations, CIO
Associate VP for Budget & Planning
Associate VP for Community Outreach
Associate VP for Institutional Equity
Associate VP of University Relations
Director of Intercollegiate Athletics
Executive Director of Alumni Relations
Assistant VP of the Div. of Multicultural Affairs
Assistant to the President
Secretary to the Board of Trustees

Dr. Dunn, who began his teaching at the University of Connecticut in 1972, earned bachelor's and master's degrees from Northern Illinois University in 1967 and 1969, respectively. He earned his doctoral degree from Brigham Young University in 1972.

President Dunn and his wife, Linda, reside in Kalamazoo in the president's official residence. They are the proud parents of three children, Matthew (married to Lesley), Michael and Kerry.



DR. JOHN M. DUNN





WESTERN MICHIGAN UNIVERSITY

GRAB THE REINS.

WMU MEDIA RELATIONS



MAT KANAN

DIRECTOR OF MEDIA RELATIONS

Ohio, 1997
Fifth Season
269-387-4125/269-998-2259
mat.kanan@wmich.edu



MATT HOLMES

ASSOCIATE DIRECTOR OF MEDIA RELATIONS

Indianapolis, 2002
Fifth Season
269-387-3168
matt.holmes@wmich.edu



KRISTIN KEIRNS

ASSISTANT DIRECTOR OF MEDIA RELATIONS

Heidelberg, 2005
Fourth Season
269-387-4123
kristin.keirns@wmich.edu



ADAM BODNAR

ASSISTANT DIRECTOR OF MEDIA RELATIONS

Western Michigan, 2008
Second Season
269-387-4122
adam.e.bodnar@wmich.edu

WEBCASTS

All home games are video streamed live on www.wmubroncos.com as part of the "Bronco Insider" premium service. Subscriptions rates are \$9.95 a month, \$29.95 for the basketball package or \$45.95 for the entire year (which includes video for all WMU sports). Note: Games broadcast by ESPN will not be made available.

PRINT

Kalamazoo Gazette; beat writer: Graham Couch
Western Herald

ELECTRONIC

WWMT-TV (CBS); Ed Kengerski, sports director; Andy Pepper
WOOD-TV (NBC); Jack Doles, sports director; Jason Terzis
WZZM-TV (ABC); Tom Clyde, sports director; David Solano, Dan Harland
WXMI-TV (FOX); Tim Doty, sports director; Tara Miller
WQLR-1660 AM The Fan; Dan Cash, sports director

INTERNET

Bronco Insider (subscription)
BroncoBlitz.com; MACSports.com; MACReportOnline.com
MidAmPub.com; TheMACDaily.com

BRONCO RADIO NETWORK

WZUU - 92.5 FM: (Flagship) Kalamazoo, Portage, Mattawan
WMAX - 96.1 FM: Grand Rapids, Holland, South Haven, Muskegon
WBCH - 100.1 FM/1220 AM: Hastings
WTVB - 1590 AM: Coldwater

BRONCO SPORTS UPDATE

WZUU - 92.5 FM; Monday-Friday, 5:50 p.m.
WQXC - 100.9 FM; Monday-Friday, 5:35 p.m.
1660 The Fan; Monday-Friday, 5:55 p.m.
WKZO - 590 AM; Monday-Friday, 3:45 p.m.

PRACTICES

Players and coaches are available for interviews after practice. Practice during the first semester takes place in the morning, while second semester practices are scheduled in the afternoon from noon to approximately 3 p.m.

Media wishing to conduct interviews should call ahead to Matt Holmes at 269-387-3168 or 269-998-1638 for exact practice times and arrive 15-30 minutes before practice ends.

The media relations office will arrange a time for players or coaches to call or meet media that can't attend practice.

Unless special arrangements have been made, players are not accessible to media prior to contests on game day.

WMU head coach Steve Hawkins is available for interviews to be broadcast on opposing team's radio pregame shows, but interviews should be scheduled and recorded prior to game day unless special arrangements have been made.

Note: Certain players may be made unavailable at coach's discretion.

CREDENTIALS

Requests for single game and season media credentials should be directed to Matt Holmes at 269-387-3168 or 269-998-1638.

Seating along press row at University Arena is limited, priority will be given to media on deadline.

Credential requests must be received no later than 24 hours in advance of the game.

If requests are made seven days prior to the game, credentials can be mailed. Otherwise they can be picked up at the media entrance on the south side of University Arena located off of the media parking lot (Lot 14).

PHONE LINES

Visiting commercial radio stations will receive a complimentary phone line or ISDN line. To order an additional line, contact Dannie Alexander at 269-387-3346.

Phone lines are limited along press row for reporters filing stories, but University Arena does feature free wireless internet.

GAME SERVICES

All members of the working media will be supplied with a game program, statistics and pregame notes, in addition to complimentary food service before the game. Final and halftime statistics will also be provided along with play-by-play.

POSTGAME INTERVIEWS

The head coaches of both teams and requested players will be made available following all Bronco home games in the media room, located on the second floor of University Arena.

Opposing players and coaches may choose to hold interviews outside their locker room instead of in the media room.

The Western Michigan locker room is closed to all members of the media. Players and coaches will be made available for one-on-one TV interviews by request.

RADIO/TELEVISION PROGRAMS

Hawkins appears on "Bronco Review," a weekly half-hour television show devoted to Bronco Athletics. "Bronco Review" is slotted for Thursdays, starting in January, at 7:30 p.m. on WLLA-TV. The show replays on Saturdays at 10 a.m.

Hawkins also joins Robin Hook and Matt Holmes on "Bronco Review," every Thursday evening (6-7 p.m.) from Old Burdicks Grill. The show airs live on Kalamazoo's ESPN 1660 AM.

WEB SITE

The official WMU Athletic Web Site contains information on all 16 varsity sports. Each sport's home page contains the latest news releases, statistics, roster, and schedule. It is necessary to have Adobe Acrobat Reader installed on your computer to view the PDF formatted news releases.

All Bronco home matches can be seen live on the Internet by visiting www.wmubroncos.com and signing up for Bronco Insider. This service allows you to watch and listen to the games when you can't make it to University Arena.

Bronco fans can follow Live Stats of all WMU matches FREE. Simply go to www.wmubroncos.com, go to the volleyball home page and click Schedule. Click the camera icon to be taken to that particular match's live stats and follow the game.

MAC NEWS MEDIA ASSOCIATION (MNMA)

A media organization supporting the MAC since the 1950s, the MAC News Media Association is a key component to the publicity efforts of local schools and the league office.

To join the MNMA please contact Secretary-Treasurer Paul Vecchio at 716-645-6761 or pvecchio@buffalo.edu. Information can also be obtained at the official at <http://mnma.net/macnma-form.pdf>.

WHAT'S IN A NAME?

When referring to the basketball program or the conference, please used the following:

- Western Michigan University
- Western Michigan
- WMU
- Broncos
- Mid-American Conference
- MAC

NOT

- Western
- MAC Conference



TWITTER

Follow Coach Hawkins and Western Michigan Athletics on Twitter.

twitter.com/BroncoBBall
twitter.com/holmeswmu

FACEBOOK

Fans can also follow Bronco Volleyball on Facebook. Go to Facebook.com and search Bronco BBall.





WESTERN MICHIGAN UNIVERSITY

GRAB THE REINS.



ATHLETIC STAFF & COACHES



*Kathy Beauregard
Athletic Director*



*Dave Corstange
Senior Associate Athletic Director*



*Monty Porter
Associate Athletic Director*



*Dennis Corbin
Assistant Athletic Director*



*Bob D'Amelio
Assistant Athletic Director*



*Robin Hook
Assistant Athletic Director*



*Jeff Stone
Associate Athletic Director*



*Amy Washington
Assistant to Athletic Director &
Senior Associate Athletic Director*



*Dannie Alexander
Director of Facilities*



*Don Beyer
Director of Ticket Operations*



*Kyle Blecha
Director of Medical
Services*



*Rob Hunt
Director of Athletic
Development*



*Elains Russell
Director of Marketing*



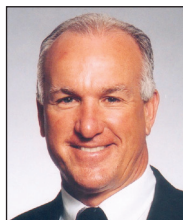
*Maria Sanchez
Director of Academic
Services & Compliance*



*Rachel Strassner
Director of Corporate
Relations*



*Stacy Vallier
Director of Corporate
Relations*



*Bill Cubit
Head Coach
Football*



*Jim Culhane
Head Coach
Hockey*



*Randy Ford
Head Coach
Baseball*



*Suzie Grech
Interim Head Coach
Women's Soccer*



*Steve Hawkins
Head Coach
Men's Basketball*



*Betsy Kuhle
Head Coach
Women's Tennis*



*Betsy Kuhle
Head Coach
Women's Tennis*



*Kathy Leitke
Head Coach
Softball*



*Kelly Lycan
Head Coach
Cross Country/Track & Field*



*Tasha McDowell
Head Coach
Women's Basketball*



*Dave Morin
Head Coach
Men's Tennis*



*Colleen Munson
Head Coach
Volleyball*



*Stu Riddle
Head Coach
Men's Soccer*



*Cindy Trout
Head Coach
Golf*





WESTERN MICHIGAN UNIVERSITY

GRAB THE REINS.

ATHLETIC STAFF DIRECTORY

ADMINISTRATION

Kathy Beauregard
Dave Corstange
Monty Porter
Jeff Stone
Dennis Corbin
Bob D'Amelio
Robin Hook
Amy Washington

Director of Athletics
Senior Associate AD
Associate AD/Business Operations
Associate AD/Academic & Compliance Services
Assistant AD/Medical & Support Services
Assistant AD/Marketing, Publicity & Licensing
Assistant AD/Broadcasting & Corporate Sales
Administrative Assistant to AD

ACADEMIC & COMPLIANCE SERVICES

Maria Sanchez
Marshall Steward
Rachel Strassner

Director of Athletic Academic Services
Athletic Academic Advisor
Director of Compliance

BUSINESS OFFICE

Patty Moore
Kim Hemingway
Joe Armstrong

Financial Clerk/Business Operations
Insurance Coordinator
Computer Assistant

CHEERLEADING

Christopher Wang
Megan Nienhuis

Head Coach
Assistant Coach

CORPORATE RELATIONS

Stacy Vallier
David Zolp

Director of Corporate Relations
Assistant Director

DANCE

Kate Clark

Head Coach

DEVELOPMENT

Rob Hunt
Mellissa Porter

Director of Development for Athletics
Secretary/Gary Fund

EQUIPMENT MANAGEMENT

Kenico Hines
Dion Van Atter
Joyce Fooy

Head Equipment Manager
Equipment Manager
Equipment Manager

FACILITIES

Dannie Alexander
Matt Kulik

Director of Athletic Facilities
Assistant Director of Athletic Facilities

MARKETING & PROMOTIONS/LICENSING

Elaine Russell
Kim Stoebick

Director of Sports Marketing
Coordinator of Community Relations

MEDIA RELATIONS

Mat Kanan
Matt Holmes
Kristin Keirns
Adam Bodnar

Athletic Media Relations Director
Associate Media Relations Director
Assistant Media Relations Director
Assistant Media Relations Director

TICKET OFFICE

Don Beyer
Matt Folck

Director of Ticket Operations
Assistant Director of Ticket Operations

TRAINING/STRENGTH STAFF

Kyle Blecha
Brian Bauer
Kate Dornbos
Lisa Hardy
Kevin Lehmann
Nate Peoples
Tim Herrmann
Jen Query

Director of Medical Services
Assistant Director of Medical Services
Assistant Athletic Trainer
Assistant Athletic Trainer
Assistant Athletic Trainer
Head Football Strength & Conditioning Coach
Head Strength & Conditioning Coach
Head Strength & Conditioning Coach

BASEBALL

Randy Ford
Scott Demetral

Head Coach
Assistant Coach

MEN'S BASKETBALL

Steve Hawkins
Clayton Bates
Rick Carter
Bacari Alexander
Michael Murray

Head Coach
Assistant Coach
Assistant Coach
Assistant Coach
Coordinator of Basketball Operations

WOMEN'S BASKETBALL

Tasha McDowell
Glenn Box
Yvette Harris
Phil Sayers
Lindsey Hass

Head Coach
Assistant Coach
Assistant Coach
Assistant Coach
Director of Basketball Operations

FOOTBALL

Bill Cubit
Steve Morrison
Mike Grant
Ryan Cubit
Tim Daoust
Rick Kravitz
Peter McCarty
Jake Moreland
Mike Sabock
Bob Stanley
Tim Knox
Patrick Bracken

Head Coach
Defensive Coord./Assistant Coach
Assistant Head Coach
Assistant Coach
Assistant Coach
Assistant Coach
Assistant Coach
Assistant Coach
Assistant Coach
Assistant Coach
Assistant Coach
Director of Football Operations
Coordinator of Video Operations

WOMEN'S GOLF

Cindy Trout

Head Coach

GYMNASTICS

David Kuzara
Kevin Anderson

Head Coach
Assistant Coach

HOCKEY

Jim Culhane
Scott Robson
Marc Fakler
Lynn Ross
Paul Schneider

Head Coach
Assistant Coach
Assistant Coach
Secretary
Manager/Lawson Arena

MEN'S SOCCER

Stu Riddle
Ben Pirmann
Allen Riddle

Head Coach
Assistant Coach
Director of Men's Soccer Operations

WOMEN'S SOCCER

Suzanne Grech
Abby Crumpton

Interim Head Coach

SOFTBALL

Kathy Leitke
Jamie Spitale

Head Coach
Associate Head Coach

MEN'S TENNIS

Dave Morin
Jose Orozco

Head Coach
Assistant Coach

WOMEN'S TENNIS

Betsy Kuhle
Mark Henderson

Head Coach
Assistant Coach

WOMEN'S CROSS COUNTRY/TRACK & FIELD

Kelly Lycan
Bill Griffey
Taryn Sheehan

Head Coach
Assistant Coach
Assistant Coach

VOLLEYBALL

Colleen Munson
Ryan Manning
Jason Reed
Ashley Vogl

Head Coach
Associate Head Coach
Assistant Coach
Director of Volleyball Operations





WESTERN MICHIGAN UNIVERSITY

GRAB THE REINS.

The corporations and individuals listed below generously supported Western Michigan University and Bronco Athletics with gifts to the Mike Gary Athletic Fund and/or specific causes.

Mike Gary Society \$10,000 & above

A/B Construction, LLC
Robert J. Bobb
Margaret Brown
Willard A. Brown, Jr.
Jeffrey R. Cavanaugh
Cole Century, Inc.
Thomas Cole
The CSM Group
David M. Dombrowski
Steven A. East
Tara T. East
Catherine L. Graham
Greenleaf Hospitality Group
Greenleaf Trust
William D. Johnston
James Kalleward
Tonia S. Kalleward
Maple Hill Auto Group
MPI Research
National City Bank of the Midwest
Radisson Plaza Hotel
Karie Ross
Gary G. Shook
Spartan Paperboard Company, Inc.
Ronda E. Stryker
Jim Vandenberg
Harold Zeigler Auto Group
Aaron J. Zeigler
Bonita Zeigler
Bonnie A. Zeigler
Harold J. Zeigler

Scholarship Club \$5,000 - \$9,999

Armstrong International, Inc.
Diana M. Bernard
Edward M. Bernard
Bernard's Property, LLC
David R. Buskirk
Douglas Callander
Eleanor Callander
Citizens to Elect Dave Buskirk
Jeff P. Clark
Coca-Cola Bottling Company of Michigan
Margaret A. Denenfeld
Marlene Denenfeld
Paul J. Denenfeld
Stephen Denenfeld
DeNooyer Chevrolet
Aldrienne D. DeNooyer
Diane DeNooyer
Jeffrey L. DeNooyer
William T. DeNooyer
Eckert-Wordell Architects
Lois E. Ellis
EMA Enterprises
First National Bank of Michigan
GS Photo
James Hess
Jeanne L. Hess
Huntington National Bank
Carol Ann Jackson
Ronald H. Jackson *
Leonard Johnston
Way D. Jones
Richard H. Jones
Jane Leeuw
Mike Leeuw
Wayne LeNeave
Maggie's Corporation
Metro Toyota
Millennium Restaurant Group
Julie Miller
Kenneth V. Miller
James M. Moeller
Patrice L. Moeller
David G. Morrison
Kay Morrison
William J. Parsons
Schupan & Sons, Inc.
Marc Schupan
Don Seelye Ford, Inc.
Michael Seelye
Sharon Seelye
Southwest Michigan First
Stafford-Smith, Inc.
Summit Energy Services
John Tapper Automotive

Directors Club \$2,500 - \$4,999

Ann E. Anderson
Jack B. Anderson
Cripps Fontaine Excavating, Inc.
James M. Cripps
Lyndon L. Cronen
Mary F. Kissinger DeMaagd
Thomas W. DeMaagd
George A. Franklin
Molly Franklin
D. L. Gallivan, Inc.
Jeff A. Gardner

Charles O. Howey, Jr.
John P. Hycko
Greg Jennings Foundation
Gregory A. Jennings, Jr.
Jeffrey D. Karns
Sharon L. Karns
Kelvin W. Keefer
Maxine J. Keefer
Noel J. Kott
Howard F. Luckey
Jamal Mayers
Diane Meitz
Donald C. Meitz
Jerry L. Miller
Pat Misch
Teresa M. Misch
Scott E. Niles
Nobis Agri-Service, Inc.
Ben Nobis
Terry Nobis
Carolyn J. Norris
Larry E. Norris
Pfizer Foundation **
Tamara Polmanter
Todd Polmanter
Holly S. Powell
Jim R. Ross
Lynn M. Ross
Jerard M. Salame
Garrett L. Soldano
Jennifer E. Soldano
State Farm Companies Foundation **
Liesle Walker
Dean E. Webster
Whitaker-LaChance Insurance Agency, Inc.
Lauri F. Wingle
William E. Wingle
Wolff Financial Management, LLC
Matthew R. Wolff

Champions Club \$1,000 - \$2,499

Carolyn A. Adams
William V. Adams
Aetna Foundation, Inc. **
Janie S. Albright
Barbara Jean Alexander
Charles B. Alexander
American Metal Fab, Inc.
Ann Marie Andrus
William E. Andrus
Phillip J. Anglin
David S. Ansel
Nicole R. Armstrong
Patrick B. Armstrong
Patricia M. Ashby
Carl L. Awe
Sharon R. Awe
Judith K. Beam
Robert M. Beam
Kathy B. Beauregard
Richard A. Beauregard
Dennis Berkebile
Sue Ann Berkebile
James R. Bernard
Blackhawk Bar & Grill
James E. Bollweg
Martha L. Boughner
Robert E. Boughner
Charlotte Boven
Donald E. Boven
Kelly M. Brennan
Douglas E. Brigham
Linda E. Brigham
Betty J. Brisendine
Jacob E. Brisendine
Andrew A. Brogowicz
Patricia G. Brogowicz
Matt Brosco
Charles B. Brotebeck
Patricia Brotebeck
Dolores M. Bryck
Richard D. Bryck
Barbara Ann Burke
Janis R. Burnett
Quinter Burnett, II
Frank E. Calvaruso
Carol A. Carpenter
George A. Carpenter
Heidi M. Chmiel
John J. Chmiel
Constance Chrysler
Joseph A. Chrysler
Joan Chura
Robert A. Chura
Karin Cohn
Marion H. Cohn
Robert B. Compton
Consumers Energy Foundation **
Joseph R. Cooper
Vicki L. Cox
Jennifer A. Coyne
Gary L. Cramer
Thomas A. Cramer
Fred A. Decker
Leslie Decker
Carol A. Demetral
Chris Demetral

Scott D. Demetral
Ted Demetral
J. Craig DeNooyer
Sarah L. DeNooyer
Jon M. Dixon
Susan M. Dixon
Erwin H. Doerschler
James R. Dolan
Patricia Dolan
Diane K. Dreher
Gary Dreher
Michael J. Dreher
Ed Edwards
M. Josephine Edwards
Nanette S. Elenbaas
Ronald A. Elenbaas
Allen C. Emmons
Susan R. Emmons
Deborah A. Engers
Dennis W. Engers
Janis Nelson English
Robert J. English
Alain Y. Fabi
Michele Fabi
Charles J. Farho
Joyce E. Farho
Fifth Third Bank
First Agency, Inc.
Lynn Ford
Randy D. Ford
The Gagie School
Joe Gage
Sandra Sue Gage
David L. Gallivan
Diane Gallivan
Lloyd E. Gearhart
Robert E. Geiger
Jessica Gustke
Todd E. Gustke
H & H Painting Company, Inc.
Ann L. Hannon
Bill Harrison
Alfred V. Heilman
Mary Beth Henry
Thomas J. Henry
Rosalynd Marie Hogan
IHS Distributing Company, Inc.
Indian Trails, Inc.
Mark A. Jackson
A. Taylor Jacobs
Cheryl L. Jensen
Sam Jensen
Peter C. Katt
Kellogg's Corporate Citizenship Fund **
Barbara Kenerson
David A. Kenerson
Donald J. Kenney
Susan King
Thomas G. King
Mary L. Kinney
Phillip J. Kinney
David E. Kinnisten
Elizabeth A. Kinnisten
Donald J. Knoechel
Teresa Ann Knoechel
Mark K. Knust
Ryan E. Kochen
Carle Koessel
Norma A. Koessel
Darlene E. Kohman
George R. Kohman
William J. Kowalski
Barbara J. Kreis
Russell A. Kreis
Kathleen E. Kuhn
Ronald J. Kuhn
Catherine E. Kunitzer
Daniel R. Kunitzer
Michael E. Labus
Nancy L. Labus
Darrell R. Latva
Lenahan Insurance Services
J. William Lenahan, Jr.
Richard A. Lenon
Life EMS
Larry D. Lueth
Linda D. Lueth
Bonnie J. MacGrayne
Paul R. MacGrayne
Stephan L. Macomber
Main Street Pub
Kelle L. Maloney
Richard A. Maloney
Martin & Associates Environmental, LLC
Dianne W. Martin
William P. Martin
Marysville Marine Distributors
Robert Lynn McAllister
Thomas C. McAllister
Mary Elizabeth McCormick
Thomas L. McCormick
McKinley Financial Services, Inc.
James R. McKinley
Carole H. McKinstry
Clifford J. McKinstry
Don McMillin
Linda McMillin
Meadow View Village Mobile Home Park
Mark D. Meijer

Karen L. Meinke
Kenneth J. Meinke
Ruth Ann Meyer
Robert G. Millard
Rose F. Millard
Charles D. Miller
Doris M. Miller
Gene F. Miller
Jean Miller
I. William Minor
Modinere Company
Norine Agnes Morse
James W. Munden
Susan Florence Munden
Vicky L. Musky
Frank Nagy
Gail A. Nelson
Terry L. Nelson
Charles R. Nidiffer
Dolores Nidiffer
Elizabeth L. Nobis
Kenneth P. Nobis
Nulty Agency, Inc.
O.K. Distributors, Inc.
Greg J. O'Neil
Floyd L. Parks
Phyllis E. Parks
Performance Communications, Inc.
Pharmacia Foundation **
Portage Cleaners & Laundry
Robert D. Prentice
Ruth Anne Prentice
Barry Gilbert Purse
George A. Rabick
Susan J. Rabick
David D. Reeves
Keith Roberts
Adam M. Rosaes
Lynn K. Russell
Richard T. Russell
Daryl Rynd
Raymond J. Sackett
Nancy S. Saunders
William C. Saunders
Linda M. Sawall
Robert B. Sawall
Jennifer C. Scanlon
Kevin Gerard Scanlon
Daniel J. Scheid
Laura Scheid
John A. Schlukebir
SE Michigan WMU Alumni Association
Donna L. Seilheimer
Randy H. Seilheimer
Glen A. Shaugars
Janice C. Shaugars
Carol A. Simpson
David J. Simpson
Christine C. Sitkins
Frederick Z. Sitkins, Sr.
Bonnie Skippers
Glen L. Skippers
Brian J. Smith
Kay Varga Smith
Laura A. Smith
Thomas W. Smith
Marjorie A. Springgate
Roland R. Springgate
Ross F. Stancati
M. Gayle Stephenson
Stryker Instruments
Kenneth L. Taft
Susan Taft
Alan Thomas
Gail J. Thompson
William C. Thompson
Johnathon Toner
Kerry A. Toner
Vickie L. Toner
Mary Little Tyler
Bruce Allen Ullery
Patti H. Ullery
Larry Van Popering
Laura Van Popering
James H. Vandenberghe
Sandra M. Vandenberghe
Roger A. VanderBeek
Susan D. VanderBeek
VanSweden Jewelers
C MacKenzie Waldorf
Sydney Waldorf
Daniel S. Warnaar
Helen F. Wattles
John C. Wattles
Wester Dental Care, P.C.
Keith E. Wester
James Edward White
Lee Ann White
Nancy U. Woodworth
Thomas B. Woodworth, Jr.
Donald R. Zuidweg

Directors Club \$2,500 - \$4,999

Ann E. Anderson
Jack B. Anderson
Cripps Fontaine Excavating, Inc.
James M. Cripps

Lyndon L. Cronen
Mary F. Kissinger DeMaagd
Thomas W. DeMaagd
George A. Franklin
Molly Franklin
D. L. Gallivan, Inc.
Jeff A. Gardner
Charles O. Howey, Jr.
John P. Hycko
Greg Jennings Foundation
Gregory A. Jennings, Jr.
Jeffrey D. Karns
Sharon L. Karns
Kelvin W. Keefer
Maxine J. Keefer
Noel J. Kott
Howard F. Luckey
Jamal Mayers
Diane Meitz
Donald C. Meitz
Jerry L. Miller
Pat Misch
Teresa M. Misch
Scott E. Niles
Nobis Agri-Service, Inc.
Ben Nobis
Terry Nobis
Carolyn J. Norris
Larry E. Norris
Pfizer Foundation **
Tamara Polmanter
Todd Polmanter
Holly S. Powell
Jim R. Ross
Lynn M. Ross
Jerard M. Salame
Garrett L. Soldano
Jennifer E. Soldano
State Farm Companies Foundation **
Lewis Walker
Dean E. Webster
Jan A. Webster
Whitaker-LaChance Insurance Agency, Inc.
Lauri F. Wingle
William E. Wingle
Wolff Financial Management, LLC
Matthew R. Wolff

Honorary Coaches Club \$500 - \$999

Mary M. Allwardt
Robert S. Allwardt
Diane K. Anderson
John E. Anding
Judah Ari-Gur
Phnia Ari-Gur
Elizabeth Aseritis
Peter L. Aseritis
Eugene J. Asken
Eve Asken
Jane E. Baker
Harold L. Bate
Sherry Bate
Jay E. Battilana
BC REPROGRAPHICS, INC.
Alan W. Bellie
Jane M. Bellie
Judith A. Berridge
Ronald A. Berridge
Carol L. Beyer
Donald Charles Beyer
Judith K. Bezile
Richard T. Bezile
Big Boy of South Haven
Big Boy of Wayland
Debra L. Bird
Patrick John Birney
Laurel L. Blasi
Janene L. Breneman
Jeffrey S. Breneman
Catherine A. Brennan
Terrence E. Brennan
John R. Bromley
Gary P. Brown
Logan Brown
Diane K. Budrow
Jack C. Budrow, Jr.
Marilyn R. Buist
Phillip C. Buist
Lewis E. Burchard
Brad Bushman
Byce & Associates
Brian D. Caplan
Robert R. Capp
Sandra L. Capp
Georgia L. Carter
Century Concrete Construction Company
Geoffrey E. Clapp
Linda J. Clapp
Valorie J. Clore
Wallace B. Clore, III
Marilyn G. Clysedale
Pat Clysedale
Orlando A. Colaneri
James C. Coleman
Lucille R. Conway
James W. Cook
Suzanne Cook

Thomas F. Cook
Timothy M. Cooper
Coopertech LLC
Dennis R. Corbin
Gayle Ann Corbin
Dawnnara Corbit
John W. Costello
Cynthia Yendes Cox
Homer C. Cox, III
William H. Cox
Monique Coyne
Thomas E. Coyne
Beverly J. Crabb
Robert W. Crabb
Bill Cubit
Nancy Cubit
Millie R. Cudney
Diane D'Amelio
Robert F. D'Amelio
Maribeth Dangel
Roy Dangel
Elizabeth Ann Darnell
Charles Tadd Davis
Deborah J. Davis
William De Koff
Judy DeHaan
Robert W. DeHaan
Barbara A. Dethn
Roger L. Dethn
Daniel T. Dekker
Kimberly L. Dekker
Michael A. Demetral
Joan Elizabeth deMink
Larry L. deMink
Susan M. Dennis
Gregory A. Dobson
Melinda Carol Dobson
Doc Steel LLC
L. D. Dossa Associates, Inc.
Bud Donnelly
Carol Ann Donnelly
Mary Allen Doud
Robert S. Doud
John M. Dunn
Linda T. Dunn
Bill Dykhus
Eaton Corporation **
Myrna I. Ebert
William A. Ebert
Educational Community Credit Union
Donald K. Edwards
Margaret E. Edwards
Pamela C. Enslin
The Honorable Richard A. Enslin
Paula K. Ernst
Stephen M. Ernst
James Escamilla
Janis L. Etzcorn
John V. Etzcorn
Joan I. Everts
John Everts
Family Relocation-Harley & Son Ent., Inc.
Fibre Converters, Inc.
Berlie Finley
Florence Finley
Ann L. Finnefrock
Donald R. Finnefrock
Gregory Lee Flaska
Graydon C. Fox
Jack D. Fox
Marion R. Fox
Sandra J. Fox
Frederick Construction, Inc.
Carl Frederick
Roberta Gabier
Russell L. Gabier
Carmen Garratt
Donald M. Garratt
John M. Gartland
Irving S. Gilmore Foundation **
Alan Glendening
Barbara J. Glendening
David M. Gould
Ann E. Gunia
Gary W. Gunia
Cori Lee Hagemann
John Y. Hagemann
Carol E. Hall
James J. Hall
Patsy F. Hand
Raymond L. Hand
Joanna B. Hartenstein-McIntyre
Ima Jane Hartman
Richard E. Hartman
Janice Anne Havel
John E. Havel
Steve Hawkins
Martha S. Hearnon
Michele Heckman
Rory Heckman
Edward J. Heinig
Ruth M. Heinig
Cynthia A. Hempstead
David M. Hempstead
Marilyn E. Hendershott
Richard F. Hendershott
Joseph P. Herdus
Patty M. Herdus
Douglas V. Heystek

GARY FUNDDONOR LIST





WESTERN MICHIGAN UNIVERSITY

GRAB THE REINS.

GARY FUND DONOR LIST



Margo J. Heystek
Guy L. Hiestand III
Sandra Hiestand
Cori G. Hills
Daniel P. Hills
The Hinman Company
Sandra Jo Hoffmann
Jere T. Hoover
Lynn A. Horton
Robert L. Horton
Kenneth L. Hosner
Hospital Network, Inc.
Lynda L. Hunt
Gary J. Hurley
Victoria M. Hurley
Jon P. Hurry
Mark J. Jaeger Safety Consulting
Mark Jaeger
Stephen E. Jefferson
Terry Baxter Jefferson
Frank H. Jeremy
Jamie Jeremy
Wendy M. Johnson
Russell Kallis
Sue Kallis
Cindy L. Kalvin
Greg Kalvin
Bonnie J. Kelley
Danny L. Kelley
Gary Kent-Bracken
Wendy L. Kent-Bracken
Mike Kiewiet
Knapp Energy
Carol Knapp
Robert D. Knapp
Timothy A. Knox
Timothy J. Kool
Joan Koster
Leslie N. Koster
Joan M. Kowal
Richard M. Kowal
Marilyn J. Kribs
Birgitta Kudlicki
Elizabeth W. Kuhle
Bryan Kuitic
Tiffany C. Kuitic
Gary B. Kushner
Synthia H. Kushner
James W. Lamborn
Marilyn A. Lamborn
Laurel Hill Swim and Tennis Club
Sandra J. Lawrence
L. Max Lee, II
Yvonne A. Lee
Janet L. LeRoy
William LeRoy
Levine & Levine
Alan G. Lewandowski
Bonnie Jean Lintz
Ronald M. Lintz
Don E. Lovejoy
Brian E. MacDonell
George F. Manley
Gladys M. Manley
Manning Enterprises
Sheri Manning
Steve Manning
Patricia Marmor
Paul Marmor
Gayle A. McCormick
Michael D. McCormick
Dennis C. McCrumb
Mary Swanson McCrumb
Kevin K. McCully
Brian McDavid
James W. McIntyre III
Michele C. McLaughlin
Jerry Meinzingler
Martha M. Meinzingler
Bonnie J. Menzie
Hal K. Menzie
Blythe E. VanderHoff Mercer
Tom Mercer
Merrill Lynch & Company Foundation, Inc. **
Michigan Commerce Bank
Allyn L. Miller
David A. Miller
Dorothy L. Miller
John T. Miller
Kellie K. Miller
Diane L. Misner
W. Craig Misner
Richard E. Morehouse, Jr.
Jake Moreland
Guy W. Morgan
Tristan Paul Moss
Michael L. Mueller
Sidney Mueller
Mulder Waterproofing & Sealants, Inc.
Edward Muller
Marcella Muller
David Robert Murdock
Lisa Murdock
James E. Murray
Benefit Associates, Inc.
Ken Nehring
Network Real Estate, LLC
Jane C. Nichols
Gordie Niles

Sandra G. Niles
Larry P. Nolan
Vern L. Norris
Jane Ann Norton
Thomas W. Norton
Jeffrey C. O'Brien
Frances A. O'Connell
Gerald John O'Connell
Michael E. Osborn
Ossewards, Anderson & Smith Investment
Joan O'Toole
Kevin E. O'Toole
Nancy S. Owen
Thomas L. Owen
Pakk Pubs, Inc.
Curt Petersen
Joan M. Paleschi
Terence A. Paleschi
Mary E. Palmer
Susan K. Pappas
William J. Pappas
Margaret E. Parrott
Eric M. Patterson
Pediatric Dentistry
Donald P. Penskar
Alice Perrone
Joseph V. Perrone
Curt Petersen
Barbara J. Piggott
Walton Piggott, Jr.
Richard Pins
M. Montgomery Porter, III
Melissa L. Porter
Evelyn A. Pratt
Kenneth I. Pratt
Bruce M. Prince
Linda K. Prince
Valdis J. Ragainis
James R. Ralph
Donald Ramlow
Mary E. Ramlow
Larry Lee Randall
Neil Rankin
Sandra M. Reece
Thomas L. Reece
Cathy Reed
Steve L. Reed
Joel H. Reinhoel
Rhino's Hometown Pub
David B. Ricard
David N. Rice
Margaret Rice
Gloria J. Richards
Steve Richards
Audrey A. Richter
Richard S. Richter
Donna Rickli
John Rickli
Kathleen Marie Rinker
Lowell P. Rinker
Dale E. Rowe
David L. Rozelle
Florence E. Rozelle
Linda L. Rumble
Roger A. Rumble
Eric R. Russell
Lynne Sage
William V. Sage
Roger Sanson
Steward Sandstrom
Donald Sappanos
Gary L. Sargent
Roxanne Sargent
Robert J. Sayfie
Stephen J. Scafaria
James T. Schaper
Vickie Ann Schaper
Richard Scheffers
Joan Kay Schmidt
Leta C. Schoenhals
Dale P. Schreuder
Elaime K. Schreuder
Jane Schreuder
John M. Schreuder
Michael Shanahan
Patricia J. Shanahan
James R. Shinar
Joanne K. Shinar
Kevin A. Shugars
Lori Ann Shugars
Margie Shugars
Wayne Shugars
Dana Slocum
Tami Slocum
Ronni L. Sofen
Raymond F. Sohn
John T. Soule
Raeanne Soule
The Spirit Shoppe
Raymond M. Sreboth
Michael A. Steffes
Nancy J. Steffes
Ann M. Stevens
Fred L. Stevens
Brenda L. Stoddard
James N. Stoddard
Michael Stoddard
Ruth Stoddard
Anne K. Stone
Jeffrey A. Stone

Nancy K. Strohs
Robert F. Strohs
Deb S. Studt-Scafaria
Chris M. Sundberg
Nancy Lynn Sundberg
Dennis M. Taft
Linda Taft
Three Rivers Anodizing, Inc.
Timber Ridge Ski Area
A. John Todd, IV
Cathy Todd
TPC of Michigan
Barbara J. Troiz
Gerald A. Troiz
Brian M. Tulik
Randy L. Utting
Shari L. Utting
Kathryn N. Van Dis
Robert W. Van Dis
David W. Van Zoest
Laura R. Van Zoest
Carol VandenBos
Roger A. VandenBosch
Louis R. VandenBosch
Betty L. Vander Molen
Richard Vander Molen
Norbert Vander Steen
Ronald J. Voelker
Terry L. Vollmer
Carolyn Nina Vredevelt
Jack R. Vredevelt
Wacker Chemical Corporation **
Leonard R. Wade
Robert F. Wagner
Susan J. Wagner
James S. Ware
Sheila D. Ware
Debra Weber
Steven Weber
Joshua T. Weiner
Larry Lee Weirick
Debi Weirick
Mark D. Weishaar
Bryan Western
Linda Western
Carol A. Whearty
Riley R. Whearty II
Whelan and Company
Judith A. White
Louis J. White, Jr.
Charles E. Wiles
Douglas E. Wills
Mary Evelyn Wills
David P. Wilson
Joyce Wilson
N. Scotty Wilson
Richard K. Wolfe
Susan A. Wolfe
Joseph L. Wood
Judy L. Wood
M. Diane Wood
Michael C. Wood *
John W. Woods, Jr.
Todd C. Woods
Workforce Strategies, Inc.
Carole L. Wright
Gerhard C. Wymbelt
Patricia L. Wymbelt
Yarrow Golf & Conference Center

Brown & Gold Club
\$250 - \$499
Elenora Adams
Robert J. Adams
Advance Recycling & Disposal, LLC
Samuel J. Antonazzo
Suzanne L. Antonazzo
Herbert R. Ayres, III
Pearl L. Bahre
Frank R. Ballard III
Bonita Bates
Halbert Lee-Earl Bates, Sr.
James S. Beadle
Patricia M. Beadle
Keith A. Beaugegard
Sue-Ellen Beaugegard
Timothy J. Bebbler
Susan Becker
Bruce L. Bendix
Susan L. Bendix
A. Wayne Berger
Imogene Berger
Donald R. Beyer
Maria M. Beyer
Anne M. Bitzer
Daniel E. Bitzer
Kelley L. Blacken
Paul F. Blacken
Verne Bodine
Anita C. Bondy
Richard Allen Bondy
Tracy H. Branson
Brent D. Breklev
Dennis D. Bridges
Eugene Brink
Jean Brink
Kathleen C. Brinkman
Norman D. Brinkman
Richard A. Buckles

Richard T. Burke
Allen S. Bush
Mary L. Bush
Lawrence M. Butler
Sally A. Butler
Arvon D. Byle
Sally J. Byle
Carrabba's Italian Grill
Robert J. Chant
Sally A. Chant
Glenn G. Cherup
Susan M. Cherup
Cynthia Ann Chesney
Gregory R. Chesney
Jerry L. Clancey
Chris Clarke
Scott R. Conant
Consumers Credit Union
David A. Corstange
Karen Corstange
Kay H. Coyne
Joseph B. Creech
Kathryn J. Creech
Steven R. Cronkite
Ryan William Cubitt
Ellen Curran
Jeffrey Allen Dahley
Stacie M. Dahley
Diann L. Danhoff
James L. Danhoff
Joyce L. DeRight
Pearl L. DeVries
Ronald A. DeVries
Harold D. Dishon
Joyce Dishon
Diane Donovan
Mark R. Donovan
Lawrence D. Dugan
Steve J. Duke
Cheryl A. Dundon
William L. Dundon
Shirley Gary Dunkin
William Wesley Dunkin
Mary Dunn
Carolyn E. Everts
James B. Everts
Jeanne Ewing
Bradley J. Fischer
Ross E. Fitzpatrick
John D. Fleckenstein, Jr.
Mary Jane Flores
Richard W. Flores, Sr.
Donna J. Fogleson
Bradley H. Fonger
Linda Jean Fonger
Patricia Ann Fosdick
Roger E. Fosdick
Randolph Theodore Foster
Jerry F. Fuss
Kathryn Fuss
C. Edward Gasaway, Jr.
Patricia A. Gasaway
Debra L. Gaugier
James W. Gaugier
Jack S. Gesmundo
Joseph L. Gesmundo
Gary J. Giever
Charles W. Glasner
Bruce D. Goethe
Carmen Green
William A. Green
John S. Griesbach
Julie L. Griesbach
Mark J. Griffith
David M. Grinder
Sue Grinder
James K. Hackenberg
Glenda Hall
Randall Hall
Michael P. Halpin
Laura A. Hamann
Norman L. Hamann
Chantal Hanel
Kenneth G. Hanel
Al Harig
Paul Hartwig
Sterling Hartwig
Nelda Sue Hayes
Robert E. Hayes
Kandace T. Higley
William H. Higley
Cynthia J. Hill
John E. Hill
Carol Ann Hindley
Douglas O. Hindley
Alfred K. Ho
Hoekstra Roofing Company
Evelyn L. Hogarth
Grant G. Hogarth, Sr.
Alan M. Holok
Robert Hollandery
Dennis R. Hollar
Jean C. Hollar
Susan S. Hollar
James F. Holtgreive
Dean K. Honsberger
Robin D. Hook
Ruth Hook
Erin M. Hunt

Robert E. Hunt II
David A. Ikerd
Theresa Ikerd
Ike's Painting Service
Improved Funding Techniques-Michigan
Infinity Sports, Inc.
Amy Taylor Johnson
Brian S. Johnson
Howard A. Johnson
Lowell Johnson
Kalamazoo Community Foundation
Kalamazoo Gazette
Robert F. Kennedy
Dan Ketterbeil
Sherry Marie Kettenbell
James W. Key, Jr.
Paige Key
Scott A. Kilgren
James Robert Kinney
Marin D. Kleckner
Sherry V. Kleckner
Anne P. Klimek
Jeffrey P. Klimek
Karen Louise Kocsondy
Zoltan G. Kocsondy
Jonathan P. Koets
Karen Faith Koets
Lois Koning
William J. Koning
Cheryl Krause
Patrick Krause
Janice L. Kuhnagen
Jerald W. Kuss
Richele F. Kuss
David Roland LaLiberte
Langeland Chapels
David James Larson
Gary M. LaTulip
Kathleen A. LaTulip
Jamie Lawlor
John R. Lawlor
Michael E. Lebednick
John Michael Lee
Lenora K. Lee
Patrick Lennon
Martha Lezotte
Raymond L. Lezotte
Mark S. Liberacki
Pamela G. Liberacki
Howard D. Linders
Leatha M. Linders
Steven Lins
Anne L. Little
Bonnie Locker
James C. Locker
James T. Long
Mable Long
Alja Lubavs
Konrads V. Lubavs
Jim Ludeman
Peggy Ludeman
Brian J. Lueth
Colleen Lundgren
Dennis D. Lundgren
Lori I. Masnari
Ray Edward Masnari
Gary R. Mathews
Edward J. Mayo
William J. Maze, Jr.
Alice McCarty
Robert McCarty
Tasha McDowell
Ryan N. McGregor
Cheryl A. McKenna
Owen P. McKenna
Kelly L. McKeough
Kevin L. McKeough
Mike Metzner
Glenn Miller
Lynne Miller
Margaret L. Miller
Richard Alan Miller
Nancy Tenbosch Mills
Robert E. Le Mills, Jr.
John G. Mizzi
Kimberly A. Mizzi
Modernistic Cleaning Services, Inc.
Aylene Y. Moore
Jack L. Moore
Diane Marie Morea
Scott Muller
Eric Murthner
Jan Murthner
Jeanette P. Nixon
Theodore F. Nixon
William R. Nobles
Northern Trust Company **
Cindy L. Paavola
Mike E. Page
Helen M. Paleschi
Lionie L. Paleschi
John Calvin Palmer III
Rebecca L. Palmer
Parker Harmin Foundation **
Genevieve Dorothy Parker
Harry Parker
Barbara J. Parsons
Michael H. Parsons
Dave Patterson

Jill B. Patterson
Carole Pawlowski
Kenneth F. Pawlowski
Hal Peacock
Maureen Peacock
Diane B. Pelc
Ronald Pelc
Erick D. Perry
Derek F. Petrak
Betsy Phillips
Kevin A. Phillips
Ken Pierce
Nancy L. Pollard
Robert C. Pollard
David L. Pruis
Bonnie Purfee
George C. Purfee
RE/MAX of Michigan
Walter A. Robson
Henry L. Rohs, Jr.
Joan Carol Rohs
Ruggers' Up & Under
Berclay A. Ruschak
William S. Ruschak
Joan M. Russell
Timothy D. Russell
Andrew Anthony Rymsha
Jose E. Santamarina
Karen Trout Santamarina
Allen D. Schau
Jack Neff Schermerhorn
Chris A. Schneider
Louise Schneider
Patricia Ann Schneider
Paul Edward Schneider
Heinz E. Schroeder
Scott's Pig Roast
Avis L. Sebaly
Ray Scott Shugars
Sign Boys, LLC
Carol D. Simpson
J. Brooks Simpson
Daniel R. Smith
Judy A. Smith
William J. Sprague
Charlene M. Sprick
Robert W. Sprick
SPX Corporation Foundation **
Gregory Dale Staudacher
Jamie L. Steenwyk
Keith B. Steenwyk
Ronald B. Stephens
Wendy L. Stock
Carol Strong
Edwin C. Strong
Janet Sutherland
Verne E. Sutherland
Judith S. Takemoto-Buckles
Margaret M. Tanner
Richard W. Tanner
Tesar Printing Company
Gary E. Tibble
Patricia M. Tibble
John W. Timko
Linda L. Tolstyka
Patrick J. Tolstyka
Emil J. Tomaneck, Jr.
Nancy Tomaneck
Lawrence A. Ulmer
Marsha R. Ulmer
Roger E. Ulrich
Melvin D. Van Dis
Vivian Van Dis
Ross VanderCook
Susan E. VanderCook
VanderMay Construction, Inc.
Gary B. Walters
Fran L. Washington
Von H. Washington, Sr.
J. William Weessies, Jr.
Gary L. Wegenke
Sandra S. Wegenke
Sheri Marie Wegner
John Weitzel
Katie Weitzel
G. Glen Weller
Timothy W. Wenzel
Donald C. Werme
Patricia Werme
Betty Weston
Frances D. Winegar
Marvin L. Winegar
Judy Woizeschke
Thomas A. Woizeschke
Kathleen A. Wolf
Thomas R. Wolf, Jr.
Janice Elaine Wright
R. Gerald Wright
Richard D. Zane, Jr.
Cynthia Marie Zeran
Jason A. Zeran
Frederick L. Zuidema
Marie Zuidema

* Deceased
** Matching Gift Donations